

Sheep Station Gully Flood Study

Volume 2 of 2

Prepared by Brisbane City Council's, City Projects Office

June 2015

Flood Study Report Disclaimer

The Brisbane City Council ("Council") has prepared this report as a general reference source only and has taken all reasonable measures to ensure that the material contained in this report is as accurate as possible at the time of publication. However, the Council makes no representation and gives no warranty about the accuracy, reliability, completeness or suitability for any particular purpose of the information and the user uses and relies upon the information in this report at its own sole risk and liability. Council is not liable for errors or omissions in this report. To the full extent that it is able to do so in law, the Council disclaims all liability, (including liability in negligence), for any loss, damage or costs, (including indirect and consequential loss and damage), caused by or arising from anyone using or relying on the information in this report for any purpose whatsoever. Flood information and studies regarding the Brisbane City Council local government area are periodically reviewed and updated by the Council. Changes may be periodically made to the flood study information. These changes may or may not be incorporated in any new version of the flood study publication. It is the responsibility of the user to ensure that the report being referred to is the most current and that the information in such report is the most up-to-date information available. This report is subject to copyright law. No part may be reproduced by any process except in accordance with the provisions of the Copyright Act 1968.



Dedicated to a better Brisbane

Brisbane City Council
 City Projects Office
 Level 1, 505 St Pauls Terrace
 Fortitude Valley QLD 4006
 GPO Box 1434
 Brisbane QLD 4000

Telephone 07 3403 8888
 Facsimile 07 3334 0071

Notice

The Brisbane City Council ("Council") has provided this report as a general reference source only and the data contained herein should not be interpreted as forming Council policy. All reasonable measures have been taken to ensure that the material contained in this report is as accurate as possible at the time of publication. However, the Council makes no representation and gives no warranty about the accuracy, reliability, completeness or suitability for any particular purpose of the information and the user uses and relies upon the information in this report at its own sole risk and liability. Council is not liable for errors or omissions in this report. To the full extent that it is able to do so in law, the Council disclaims all liability, (including liability in negligence), for any loss, damage or costs, (including indirect and consequential loss and damage), caused by or arising from anyone using or relying on the information in this report for any purpose whatsoever.

Note: *The Sheep Station Gully Flood Study is a joint initiative of Brisbane City Council and the Queensland Government.*

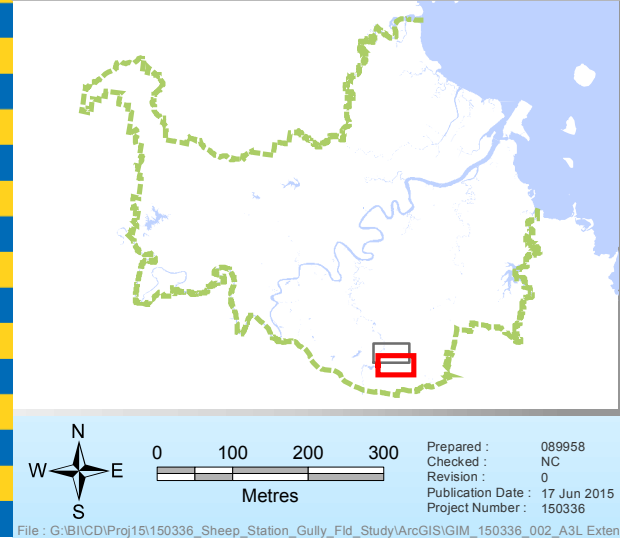
Document Control:							
Issue No.	Date of Issue	Amdt	Prepared By (Author/s)		Reviewed By		Approved for Issue (Project Director)
			Initials	RPEQ No. and Signature	Initials	RPEQ No. and Signature	Initials
1	30 June 2015	Final	PO	15453 <i>Paul O'Leary</i>	EC	<i>Maxwell</i>	<i>gpl</i> EC

Flood Mapping Contents - Design Flood Mapping

Scenario 1 – Existing Water Level Extents

- 50% AEP Scenario 1 – Existing Water Level Extents (Maps 1 & 2)
- 20% AEP Scenario 1 – Existing Water Level Extents (Maps 1 & 2)
- 10% AEP Scenario 1 - Existing Water Level Extents (Maps 1 & 2)
- 5% AEP Scenario 1 - Existing Water Level Extents (Maps 1 & 2)
- 2% AEP Scenario 1 - Existing Water Level Extents (Maps 1 & 2)
- 1% AEP Scenario 1 - Existing Water Level Extents (Maps 1 & 2)
- 0.5% AEP Scenario 1 - Existing Water Level Extents (Maps 1 & 2)
- 0.2% AEP Scenario 1 - Existing Water Level Extents (Maps 1 & 2)
- 0.05% AEP Scenario 1 - Existing Water Level Extents (Maps 1 & 2)

page intentionally left blank



Legend

- + AMTD Line
- City Plan Waterway Corridors
- Flood Inundation Extent
- Waterway/Waterbody

Prepared by:
 Brisbane City Council
 City Projects Office
 GPO Box 1434
 Brisbane Qld 4001

For more information
 visit www.brisbane.qld.gov.au
 or call (07) 3403 8888

Prepared : 089958
 Checked : NC
 Revision : 0
 Publication Date : 17 Jun 2015
 Project Number : 150336

0 100 200 300
 Metres

File : G:\BICD\Proj15\150336_Sheep_Station_Gully_Fld_Study\ArcGIS\GIM_150336_002_A3L_Extent 2yr.r

DATA INFORMATION
 The flood maps must be read in conjunction with the flood study report and interpreted by a qualified professional engineer. The flood maps are based on the best data available to Brisbane City Council ("Council") at the time the maps were developed. Council, and the copyright owners listed below, give no warranty in relation to the data (including accuracy, reliability, completeness, currency or suitability) presented in these maps and the user uses and relies upon the data in the maps at its own sole risk and liability. Council is not liable for errors or omissions in the flood maps. To the full extent that it is able to do so in law, the Council disclaims all liability (including without limitation, liability in negligence) for any loss, damage or costs (including indirect and consequential loss and damage), caused by or arising from anyone using or relying on the data contained in the flood maps for any purpose whatsoever.
 ©Brisbane City Council 2014 (Unless stated below)
 Cadastre © 2006 Department of Natural Resources and Mines 2009 NAVTEQ Street Data © 2008 NAVTEQ; 2007 Aerial Imagery ©2007 Furgio Spatial Solutions; 2005 Aerial Imagery ©2005 QASCO; 2005 Brisway © 2009 Melway Publishing; 2005 DigitalGlobe Quickbird Satellite Imagery © 2005 DigitalGlobe; 2002 Contours © 2002 AAMHatch

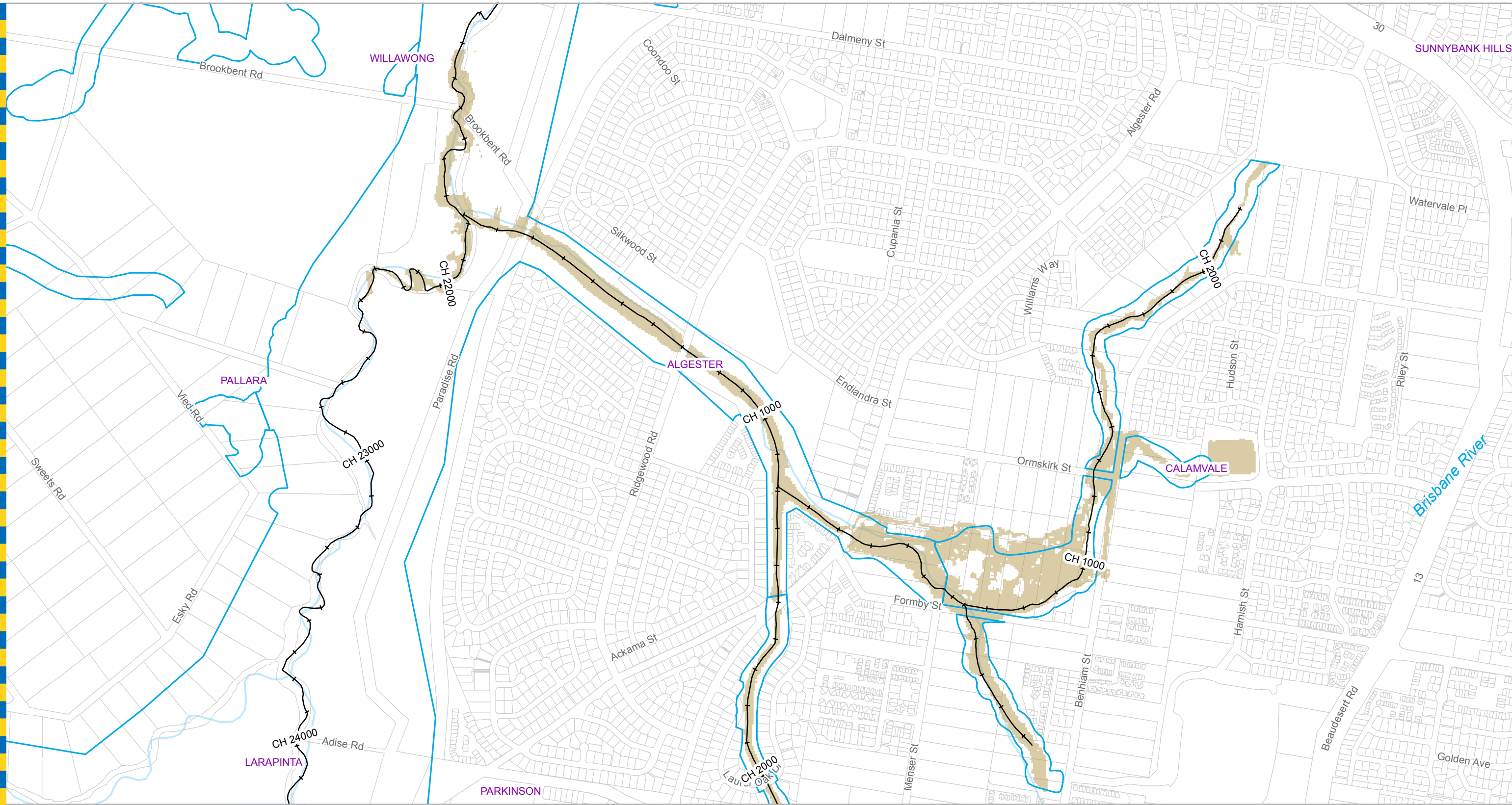


Dedicated to a better Brisbane

Sheep Station Gully Creek 50% AEP Flood Extent Map 1

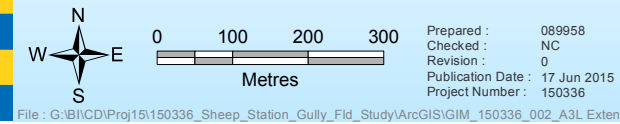
Existing Scenario

For Information Only - Not Council Policy



- Legend**
- +— AMTD Line
 - City Plan Waterway Corridors
 - Flood Inundation Extent
 - Waterway/Waterbody

DATA INFORMATION
 The flood maps must be read in conjunction with the flood study report and interpreted by a qualified professional engineer. The flood maps are based on the best data available to Brisbane City Council ("Council") at the time the maps were developed. Council, and the copyright owners listed below, give no warranty in relation to the data (including accuracy, reliability, completeness, currency or suitability) presented in these maps and the user uses and relies upon the data in the maps at its own sole risk and liability. Council is not liable for errors or omissions in the flood maps. To the full extent that it is able to do so in law, the Council disclaims all liability (including without limitation, liability in negligence) for any loss, damage or costs (including indirect and consequential loss and damage), caused by or arising from anyone using or relying on the data contained in the flood maps for any purpose whatsoever.
 ©Brisbane City Council 2014 (Unless stated below)
 Cadastre © 2006 Department of Natural Resources and Mines 2009 NAVTEQ Street Data © 2008 NAVTEQ; 2007 Aerial Imagery ©2007 Furgio Spatial Solutions; 2005 Aerial Imagery ©2005 QASCO; 2005 Brisway © 2009 Melway Publishing; 2005 DigitalGlobe Quickbird Satellite Imagery © 2005 DigitalGlobe; 2002 Contours © 2002 AAMHatch



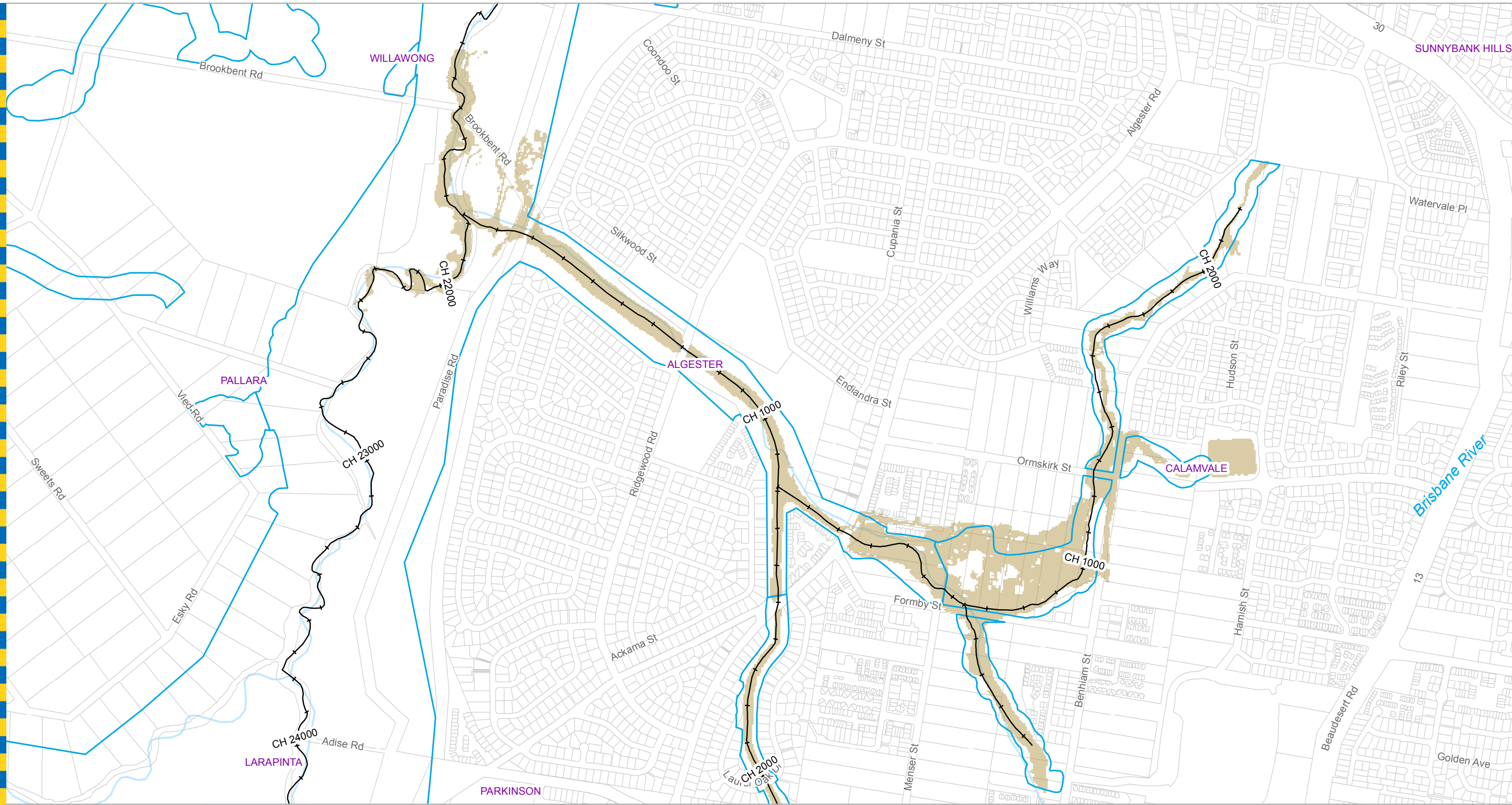
For Information Only - Not Council Policy



Dedicated to a better Brisbane

**Sheep Station Gully Creek
 50% AEP Flood Extent Map 2**

Existing Scenario



Legend

- +— AMTD Line
- City Plan Waterway Corridors
- Flood Inundation Extent
- Waterway/Waterbody

DATA INFORMATION
 The flood maps must be read in conjunction with the flood study report and interpreted by a qualified professional engineer. The flood maps are based on the best data available to Brisbane City Council ("Council") at the time the maps were developed. Council, and the copyright owners listed below, give no warranty in relation to the data (including accuracy, reliability, completeness, currency or suitability) presented in these maps and the user uses and relies upon the data in the maps at its own sole risk and liability. Council is not liable for errors or omissions in the flood maps. To the full extent that it is able to do so in law, the Council disclaims all liability (including without limitation, liability in negligence) for any loss, damage or costs (including indirect and consequential loss and damage), caused by or arising from anyone using or relying on the data contained in the flood maps for any purpose whatsoever.
 ©Brisbane City Council 2014 (Unless stated below)
 Cadastre © 2006 Department of Natural Resources and Mines 2009 NAVTEQ Street Data © 2008 NAVTEQ; 2007 Aerial Imagery ©2007 Furgio Spatial Solutions; 2005 Aerial Imagery ©2005 QASCO; 2005 Brisway © 2009 Melway Publishing; 2005 DigitalGlobe Quickbird Satellite Imagery © 2005 DigitalGlobe; 2002 Contours © 2002 AAMHatch

Prepared by: 089958
 Brisbane City Council
 City Projects Office
 GPO Box 1434
 Brisbane Qld 4001

Checked: NC
 Revision: 0
 Publication Date: 17 Jun 2015
 Project Number: 150336

For more information
 visit www.brisbane.qld.gov.au
 or call (07) 3403 8888

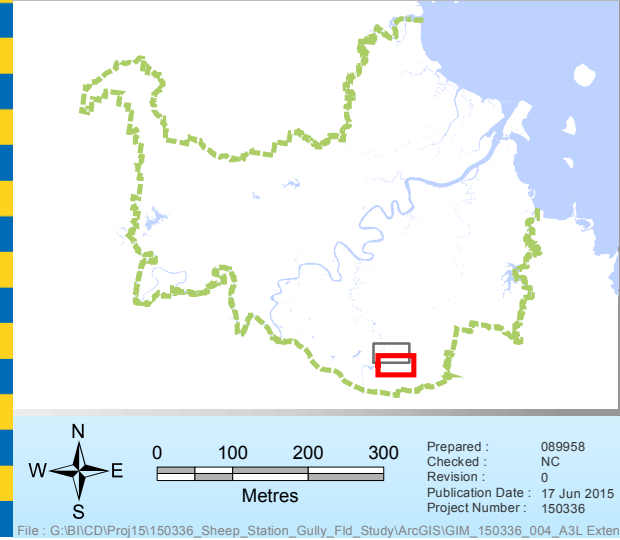
For Information Only - Not Council Policy

**Sheep Station Gully Creek
 20% AEP Flood Extent Map 2**

Existing Scenario



Dedicated to a better Brisbane



- Legend**
- + AMTD Line
 - City Plan Waterway Corridors
 - Flood Inundation Extent
 - Waterway/Waterbody

DATA INFORMATION
 The flood maps must be read in conjunction with the flood study report and interpreted by a qualified professional engineer. The flood maps are based on the best data available to Brisbane City Council ("Council") at the time the maps were developed. Council, and the copyright owners listed below, give no warranty in relation to the data (including accuracy, reliability, completeness, currency or suitability) presented in these maps and the user uses and relies upon the data in the maps at its own sole risk and liability. Council is not liable for errors or omissions in the flood maps. To the full extent that it is able to do so in law, the Council disclaims all liability (including without limitation, liability in negligence) for any loss, damage or costs (including indirect and consequential loss and damage), caused by or arising from anyone using or relying on the data contained in the flood maps for any purpose whatsoever.
 ©Brisbane City Council 2014 (Unless stated below)
 Cadastre © 2006 Department of Natural Resources and Mines 2009 NAVTEQ Street Data © 2008 NAVTEQ; 2007 Aerial Imagery ©2007 Furgo Spatial Solutions; 2005 Aerial Imagery ©2005 QASCO; 2005 Brisway © 2009 Melway Publishing; 2005 DigitalGlobe Quickbird Satellite Imagery © 2005 DigitalGlobe; 2002 Contours © 2002 AAMHatch

Prepared by:
 Brisbane City Council
 City Projects Office
 GPO Box 1434
 Brisbane Qld 4001

For more information
 visit www.brisbane.qld.gov.au
 or call (07) 3403 8888

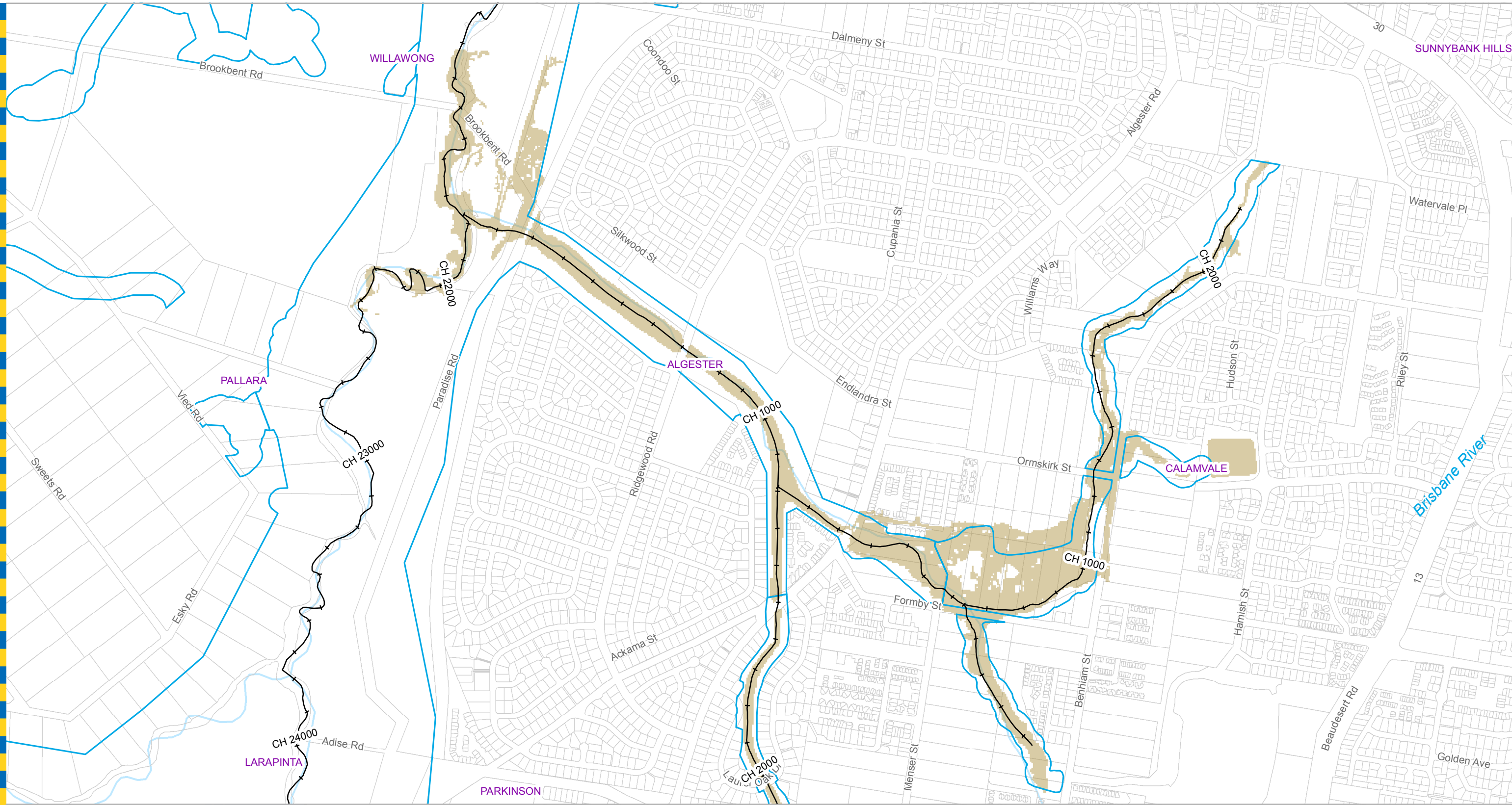


Dedicated to a better Brisbane

Sheep Station Gully Creek 10% AEP Flood Extent Map 1

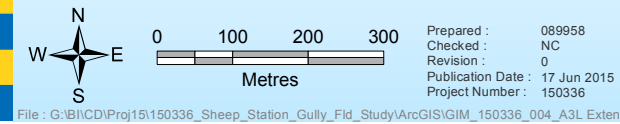
Existing Scenario

For Information Only - Not Council Policy



- Legend**
- +— AMTD Line
 - City Plan Waterway Corridors
 - Flood Inundation Extent
 - Waterway/Waterbody

DATA INFORMATION
 The flood maps must be read in conjunction with the flood study report and interpreted by a qualified professional engineer. The flood maps are based on the best data available to Brisbane City Council ("Council") at the time the maps were developed. Council, and the copyright owners listed below, give no warranty in relation to the data (including accuracy, reliability, completeness, currency or suitability) presented in these maps and the user uses and relies upon the data in the maps at its own sole risk and liability. Council is not liable for errors or omissions in the flood maps. To the full extent that it is able to do so in law, the Council disclaims all liability (including without limitation, liability in negligence) for any loss, damage or costs (including indirect and consequential loss and damage), caused by or arising from anyone using or relying on the data contained in the flood maps for any purpose whatsoever.
 ©Brisbane City Council 2014 (Unless stated below)
 Cadastre © 2006 Department of Natural Resources and Mines 2009 NAVTEQ Street Data © 2008 NAVTEQ; 2007 Aerial Imagery ©2007 Furgio Spatial Solutions; 2005 Aerial Imagery ©2005 QASCO; 2005 Brisway © 2009 Melway Publishing; 2005 DigitalGlobe Quickbird Satellite Imagery © 2005 DigitalGlobe; 2002 Contours © 2002 AAMHatch



Prepared by:
 Brisbane City Council
 City Projects Office
 GPO Box 1434
 Brisbane Qld 4001

For more information
 visit www.brisbane.qld.gov.au
 or call (07) 3403 8888

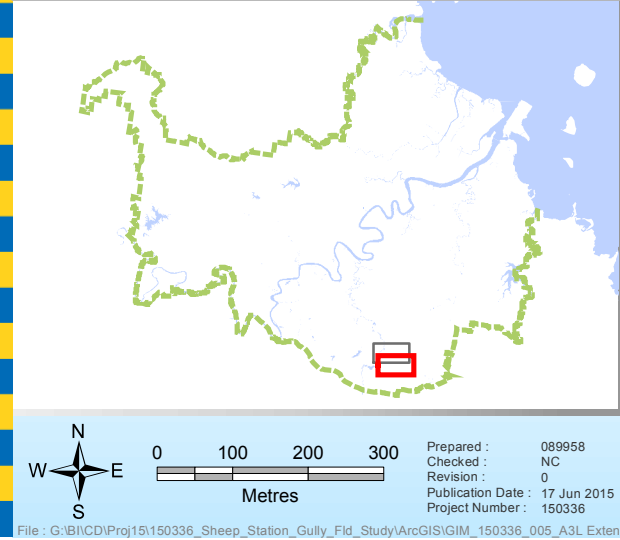
For Information Only - Not Council Policy



Dedicated to a better Brisbane

**Sheep Station Gully Creek
 10% AEP Flood Extent Map 2**

Existing Scenario



- Legend**
- + AMTD Line
 - City Plan Waterway Corridors
 - Flood Inundation Extent
 - Waterway/Waterbody

DATA INFORMATION
 The flood maps must be read in conjunction with the flood study report and interpreted by a qualified professional engineer. The flood maps are based on the best data available to Brisbane City Council ("Council") at the time the maps were developed. Council, and the copyright owners listed below, give no warranty in relation to the data (including accuracy, reliability, completeness, currency or suitability) presented in these maps and the user uses and relies upon the data in the maps at its own sole risk and liability. Council is not liable for errors or omissions in the flood maps. To the full extent that it is able to do so in law, the Council disclaims all liability (including without limitation, liability in negligence) for any loss, damage or costs (including indirect and consequential loss and damage), caused by or arising from anyone using or relying on the data contained in the flood maps for any purpose whatsoever.
 ©Brisbane City Council 2014 (Unless stated below)
 Cadastre © 2006 Department of Natural Resources and Mines 2009 NAVTEQ Street Data © 2008 NAVTEQ; 2007 Aerial Imagery ©2007 Furgo Spatial Solutions; 2005 Aerial Imagery ©2005 QASCO; 2005 Brisway © 2009 Melway Publishing; 2005 DigitalGlobe Quickbird Satellite Imagery © 2005 DigitalGlobe; 2002 Contours © 2002 AAMHatch

Prepared by:
 Brisbane City Council
 City Projects Office
 GPO Box 1434
 Brisbane Qld 4001

For more information
 visit www.brisbane.qld.gov.au
 or call (07) 3403 8888

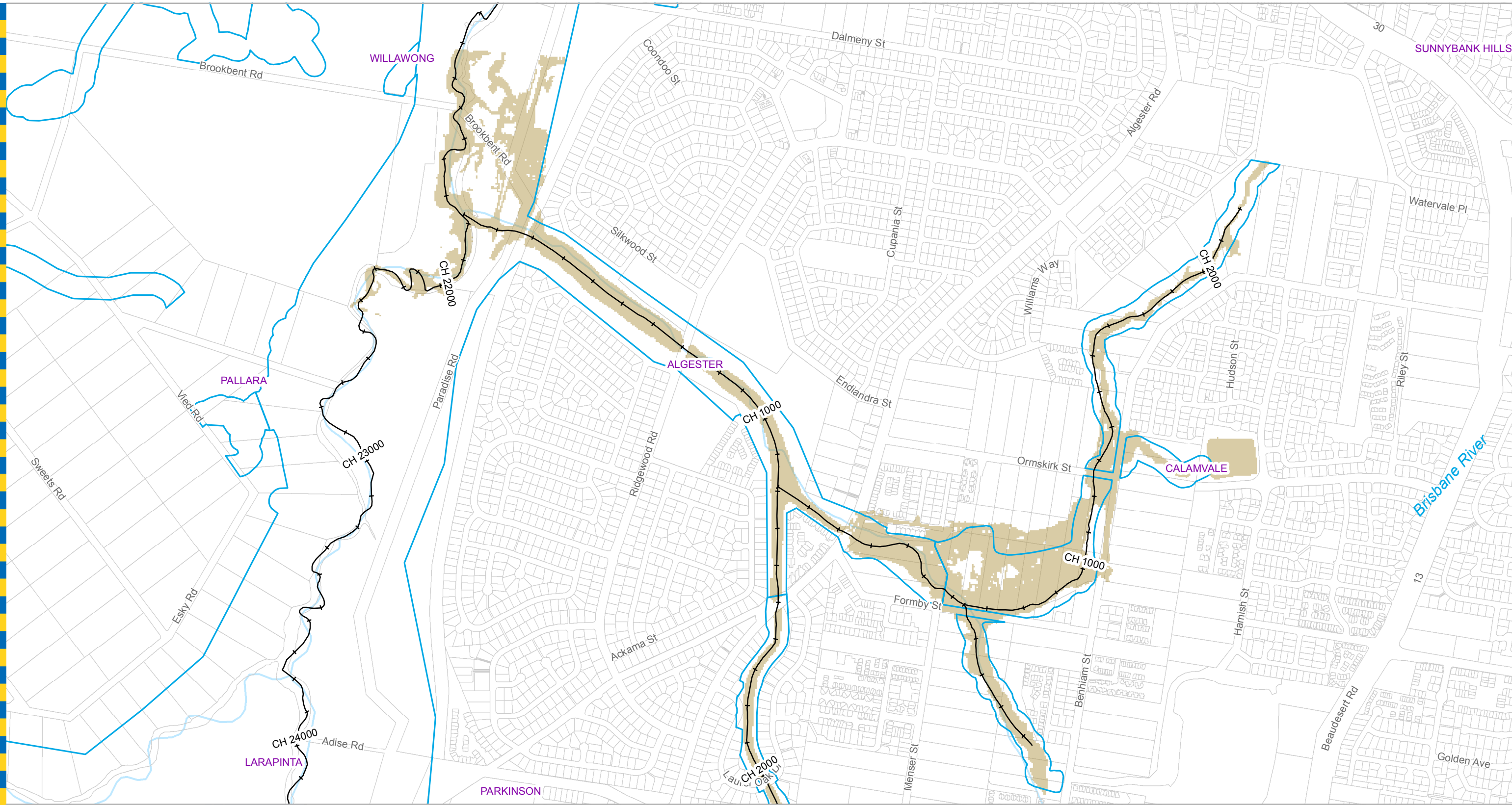
For Information Only - Not Council Policy



Dedicated to a better Brisbane

**Sheep Station Gully Creek
 5% AEP Flood Extent Map 1**

Existing Scenario



Legend

- +— AMTD Line
- City Plan Waterway Corridors
- Flood Inundation Extent
- Waterway/Waterbody

DATA INFORMATION
 The flood maps must be read in conjunction with the flood study report and interpreted by a qualified professional engineer. The flood maps are based on the best data available to Brisbane City Council ("Council") at the time the maps were developed. Council, and the copyright owners listed below, give no warranty in relation to the data (including accuracy, reliability, completeness, currency or suitability) presented in these maps and the user uses and relies upon the data in the maps at its own sole risk and liability. Council is not liable for errors or omissions in the flood maps. To the full extent that it is able to do so in law, the Council disclaims all liability (including without limitation, liability in negligence) for any loss, damage or costs (including indirect and consequential loss and damage), caused by or arising from anyone using or relying on the data contained in the flood maps for any purpose whatsoever.
 ©Brisbane City Council 2014 (Unless stated below)
 Cadastre © 2006 Department of Natural Resources and Mines 2009 NAVTEQ Street Data © 2008 NAVTEQ; 2007 Aerial Imagery ©2007 Furgio Spatial Solutions; 2005 Aerial Imagery ©2005 QASCO; 2005 Brisway © 2009 Melway Publishing; 2005 DigitalGlobe Quickbird Satellite Imagery © 2005 DigitalGlobe; 2002 Contours © 2002 AAMHatch

Prepared by:
 Brisbane City Council
 City Projects Office
 GPO Box 1434
 Brisbane Qld 4001

For more information
 visit www.brisbane.qld.gov.au
 or call (07) 3403 8888

Prepared : 089958
 Checked : NC
 Revision : 0
 Publication Date : 17 Jun 2015
 Project Number : 150336

File : G:\BICD\Proj\15\150336_Sheep_Station_Gully_Fld_Study\ArcGIS\GIM_150336_005_A3L_Extent 2015

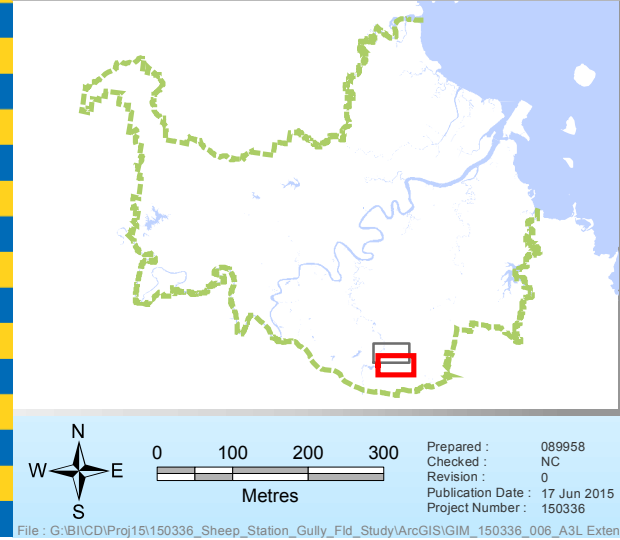
For Information Only - Not Council Policy



Dedicated to a better Brisbane

**Sheep Station Gully Creek
 5% AEP Flood Extent Map 2**

Existing Scenario



Legend

- + AMTD Line
- City Plan Waterway Corridors
- Flood Inundation Extent
- Waterway/Waterbody

Prepared by:
 Brisbane City Council
 City Projects Office
 GPO Box 1434
 Brisbane Qld 4001

For more information
 visit www.brisbane.qld.gov.au
 or call (07) 3403 8888

DATA INFORMATION
 The flood maps must be read in conjunction with the flood study report and interpreted by a qualified professional engineer. The flood maps are based on the best data available to Brisbane City Council ("Council") at the time the maps were developed. Council, and the copyright owners listed below, give no warranty in relation to the data (including accuracy, reliability, completeness, currency or suitability) presented in these maps and the user uses and relies upon the data in the maps at its own sole risk and liability. Council is not liable for errors or omissions in the flood maps. To the full extent that it is able to do so in law, the Council disclaims all liability (including without limitation, liability in negligence) for any loss, damage or costs (including indirect and consequential loss and damage), caused by or arising from anyone using or relying on the data contained in the flood maps for any purpose whatsoever.
 ©Brisbane City Council 2014 (Unless stated below)
 Cadastre © 2006 Department of Natural Resources and Mines 2009 NAVTEQ Street Data © 2008 NAVTEQ; 2007 Aerial Imagery ©2007 Furgio Spatial Solutions; 2005 Aerial Imagery ©2005 QASCO; 2005 Brisway © 2009 Melway Publishing; 2005 DigitalGlobe Quickbird Satellite Imagery © 2005 DigitalGlobe; 2002 Contours © 2002 AAMHatch

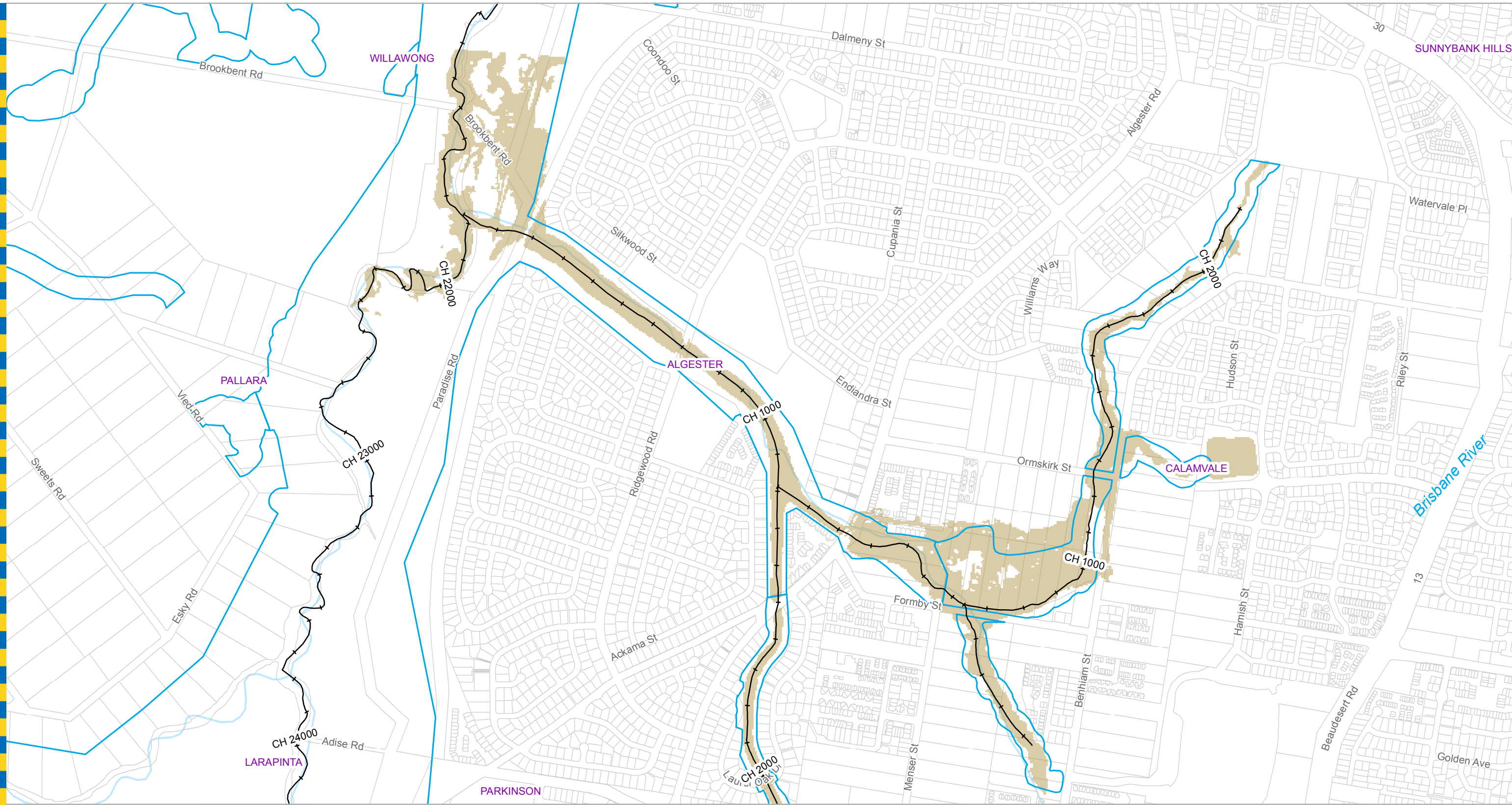


Dedicated to a better Brisbane

Sheep Station Gully Creek 2% AEP Flood Extent Map 1

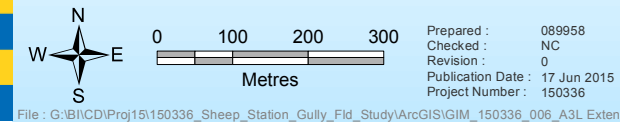
Existing Scenario

For Information Only - Not Council Policy



- Legend**
- +— AMTD Line
 - City Plan Waterway Corridors
 - Flood Inundation Extent
 - Waterway/Waterbody

DATA INFORMATION
 The flood maps must be read in conjunction with the flood study report and interpreted by a qualified professional engineer. The flood maps are based on the best data available to Brisbane City Council ("Council") at the time the maps were developed. Council, and the copyright owners listed below, give no warranty in relation to the data (including accuracy, reliability, completeness, currency or suitability) presented in these maps and the user uses and relies upon the data in the maps at its own sole risk and liability. Council is not liable for errors or omissions in the flood maps. To the full extent that it is able to do so in law, the Council disclaims all liability (including without limitation, liability in negligence) for any loss, damage or costs (including indirect and consequential loss and damage), caused by or arising from anyone using or relying on the data contained in the flood maps for any purpose whatsoever.
 ©Brisbane City Council 2014 (Unless stated below)
 Cadastre © 2006 Department of Natural Resources and Mines 2009 NAVTEQ Street Data © 2008 NAVTEQ; 2007 Aerial Imagery ©2007 Furgio Spatial Solutions; 2005 Aerial Imagery ©2005 QASCO; 2005 Brisway © 2009 Melway Publishing; 2005 DigitalGlobe Quickbird Satellite Imagery © 2005 DigitalGlobe; 2002 Contours © 2002 AAMHatch



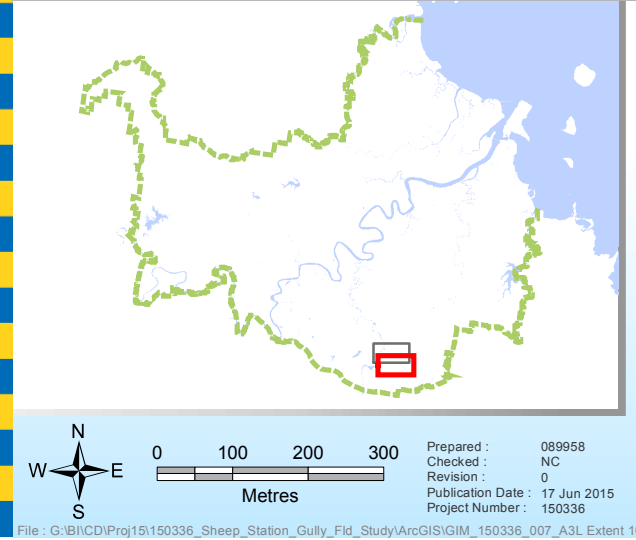
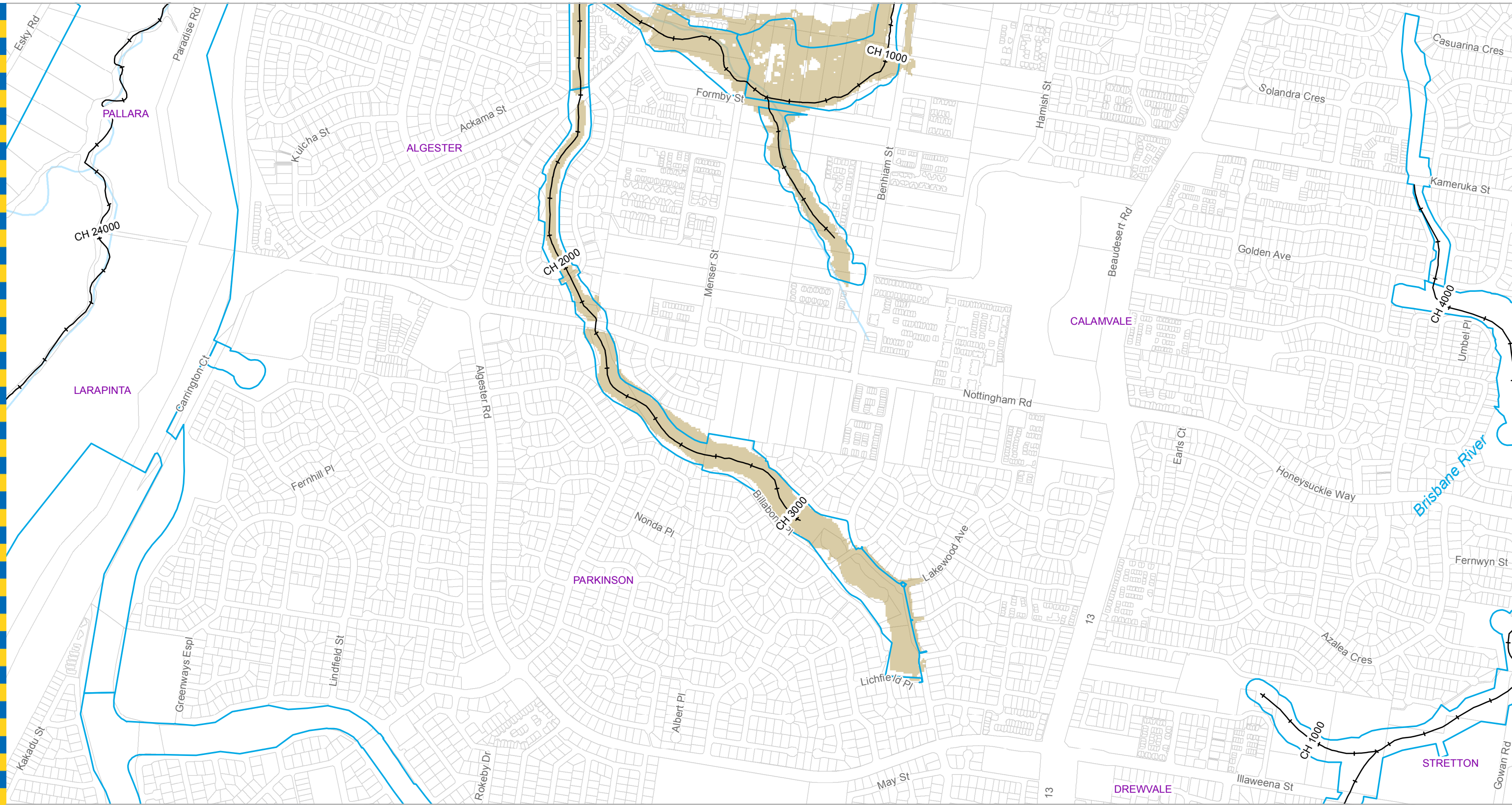
For Information Only - Not Council Policy



Dedicated to a better Brisbane

**Sheep Station Gully Creek
 2% AEP Flood Extent Map 2**

Existing Scenario



Legend

- + AMTD Line
- City Plan Waterway Corridors
- Flood Inundation Extent
- Waterway/Waterbody

Prepared by:
 Brisbane City Council
 City Projects Office
 GPO Box 1434
 Brisbane Qld 4001

For more information
 visit www.brisbane.qld.gov.au
 or call (07) 3403 8888

DATA INFORMATION
 The flood maps must be read in conjunction with the flood study report and interpreted by a qualified professional engineer. The flood maps are based on the best data available to Brisbane City Council ("Council") at the time the maps were developed. Council, and the copyright owners listed below, give no warranty in relation to the data (including accuracy, reliability, completeness, currency or suitability) presented in these maps and the user uses and relies upon the data in the maps at its own sole risk and liability. Council is not liable for errors or omissions in the flood maps. To the full extent that it is able to do so in law, the Council disclaims all liability (including without limitation, liability in negligence) for any loss, damage or costs (including indirect and consequential loss and damage), caused by or arising from anyone using or relying on the data contained in the flood maps for any purpose whatsoever.
 ©Brisbane City Council 2014 (Unless stated below)
 Cadastre © 2006 Department of Natural Resources and Mines 2009 NAVTEQ Street Data © 2008 NAVTEQ; 2007 Aerial Imagery ©2007 Furgio Spatial Solutions; 2005 Aerial Imagery ©2005 QASCO; 2005 Brisway © 2009 Melway Publishing; 2005 DigitalGlobe Quickbird Satellite Imagery © 2005 DigitalGlobe; 2002 Contours © 2002 AAMHatch

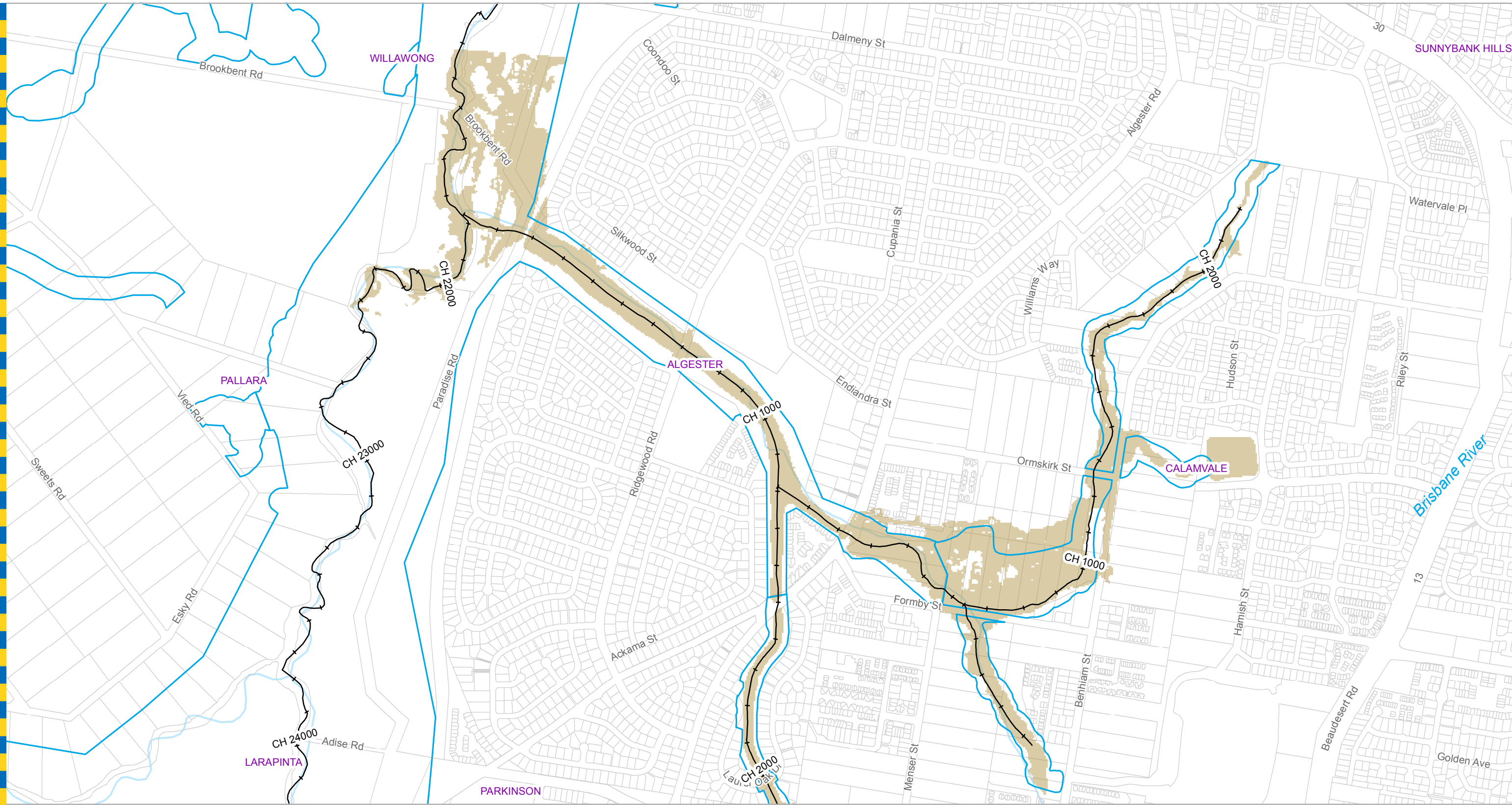


Dedicated to a better Brisbane

Sheep Station Gully Creek 1% AEP Flood Extent Map 1

Existing Scenario

For Information Only - Not Council Policy



Legend

- +— AMTD Line
- City Plan Waterway Corridors
- Flood Inundation Extent
- Waterway/Waterbody

DATA INFORMATION
 The flood maps must be read in conjunction with the flood study report and interpreted by a qualified professional engineer. The flood maps are based on the best data available to Brisbane City Council ("Council") at the time the maps were developed. Council, and the copyright owners listed below, give no warranty in relation to the data (including accuracy, reliability, completeness, currency or suitability) presented in these maps and the user uses and relies upon the data in the maps at its own sole risk and liability. Council is not liable for errors or omissions in the flood maps. To the full extent that it is able to do so in law, the Council disclaims all liability (including without limitation, liability in negligence) for any loss, damage or costs (including indirect and consequential loss and damage), caused by or arising from anyone using or relying on the data contained in the flood maps for any purpose whatsoever.
 ©Brisbane City Council 2014 (Unless stated below)
 Cadastre © 2006 Department of Natural Resources and Mines 2009 NAVTEQ Street Data © 2008 NAVTEQ; 2007 Aerial Imagery ©2007 Furgio Spatial Solutions; 2005 Aerial Imagery ©2005 QASCO; 2005 Brisway © 2009 Melway Publishing; 2005 DigitalGlobe Quickbird Satellite Imagery © 2005 DigitalGlobe; 2002 Contours © 2002 AAMHatch

Prepared by:
 Brisbane City Council
 City Projects Office
 GPO Box 1434
 Brisbane Qld 4001

For more information
 visit www.brisbane.qld.gov.au
 or call (07) 3403 8888

Prepared : 089958
 Checked : NC
 Revision : 0
 Publication Date : 17 Jun 2015
 Project Number : 150336

File : G:\BICD\Proj\150336_Sheep_Station_Gully_Fld_Study\ArcGIS\GIM_150336_007_A3L_Extent 100...

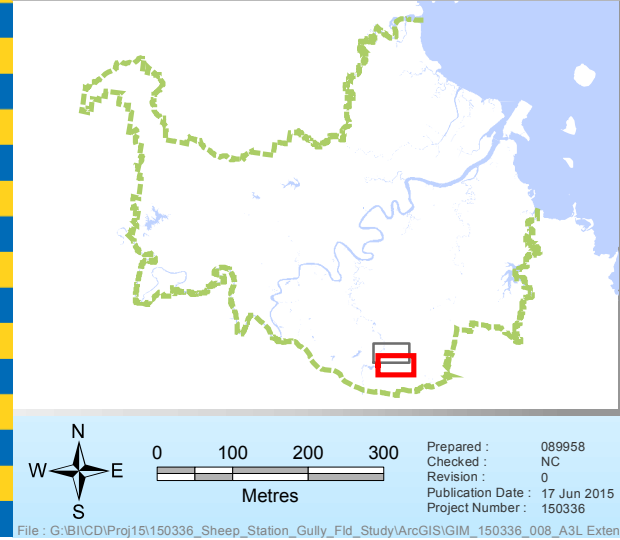
For Information Only - Not Council Policy



Dedicated to a better Brisbane

**Sheep Station Gully Creek
 1% AEP Flood Extent Map 2**

Existing Scenario



Legend

- + AMTD Line
- City Plan Waterway Corridors
- Flood Inundation Extent
- Waterway/Waterbody

Prepared by:
 Brisbane City Council
 City Projects Office
 GPO Box 1434
 Brisbane Qld 4001

For more information
 visit www.brisbane.qld.gov.au
 or call (07) 3403 8888

DATA INFORMATION
 The flood maps must be read in conjunction with the flood study report and interpreted by a qualified professional engineer. The flood maps are based on the best data available to Brisbane City Council ("Council") at the time the maps were developed. Council, and the copyright owners listed below, give no warranty in relation to the data (including accuracy, reliability, completeness, currency or suitability) presented in these maps and the user uses and relies upon the data in the maps at its own sole risk and liability. Council is not liable for errors or omissions in the flood maps. To the full extent that it is able to do so in law, the Council disclaims all liability (including without limitation, liability in negligence) for any loss, damage or costs (including indirect and consequential loss and damage), caused by or arising from anyone using or relying on the data contained in the flood maps for any purpose whatsoever.
 ©Brisbane City Council 2014 (Unless stated below)
 Cadastre © 2006 Department of Natural Resources and Mines 2009 NAVTEQ Street Data © 2008 NAVTEQ; 2007 Aerial Imagery ©2007 Furgo Spatial Solutions; 2005 Aerial Imagery ©2005 QASCO; 2005 Brisway © 2009 Melway Publishing; 2005 DigitalGlobe Quickbird Satellite Imagery © 2005 DigitalGlobe; 2002 Contours © 2002 AAMHatch

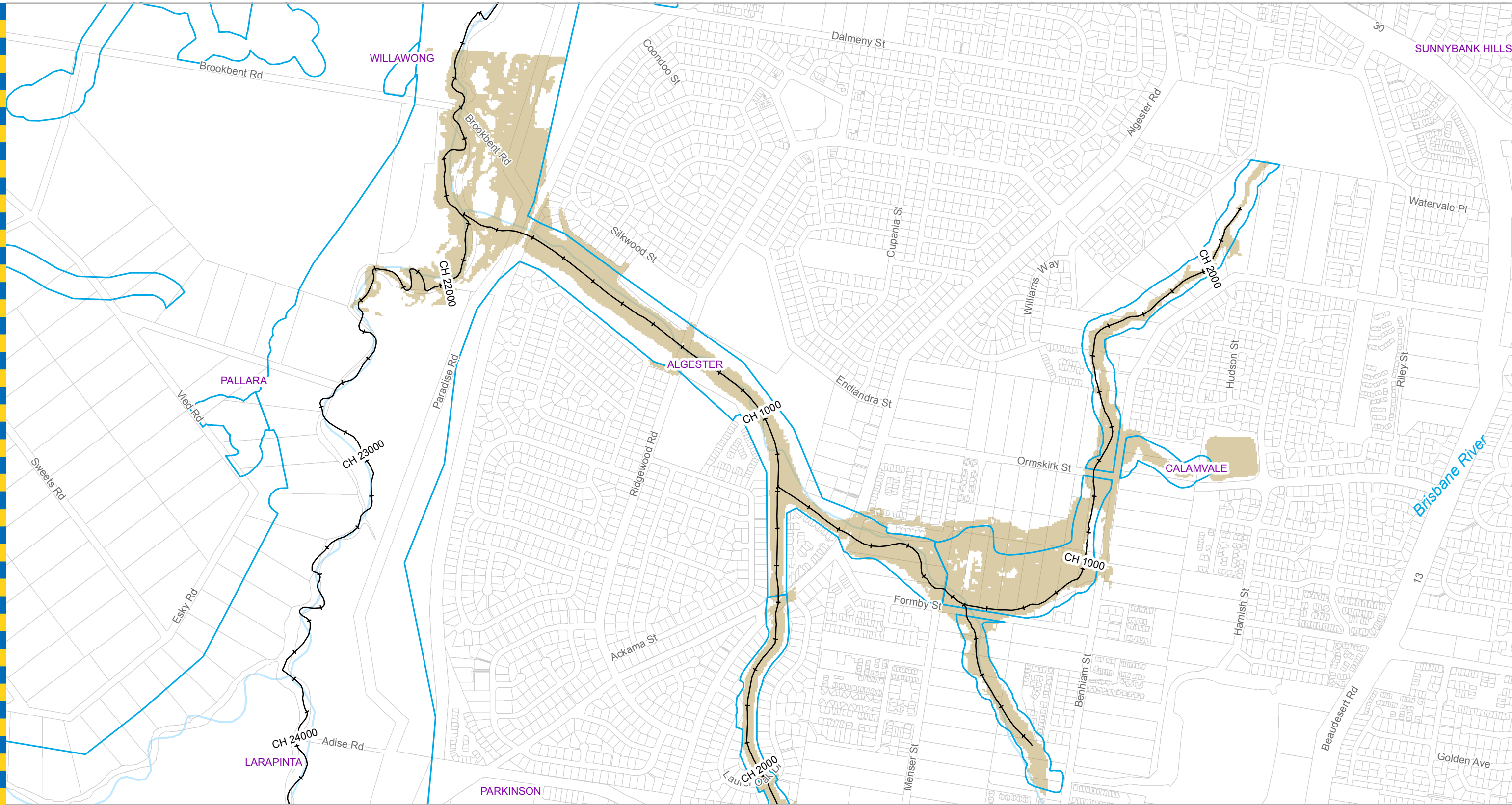


Dedicated to a better Brisbane

Sheep Station Gully Creek 0.5% AEP Flood Extent Map 1

Existing Scenario

For Information Only - Not Council Policy



Legend

- + AMTD Line
- City Plan Waterway Corridors
- Flood Inundation Extent
- Waterway/Waterbody

DATA INFORMATION
 The flood maps must be read in conjunction with the flood study report and interpreted by a qualified professional engineer. The flood maps are based on the best data available to Brisbane City Council ("Council") at the time the maps were developed. Council, and the copyright owners listed below, give no warranty in relation to the data (including accuracy, reliability, completeness, currency or suitability) presented in these maps and the user uses and relies upon the data in the maps at its own sole risk and liability. Council is not liable for errors or omissions in the flood maps. To the full extent that it is able to do so in law, the Council disclaims all liability (including without limitation, liability in negligence) for any loss, damage or costs (including indirect and consequential loss and damage), caused by or arising from anyone using or relying on the data contained in the flood maps for any purpose whatsoever.
 ©Brisbane City Council 2014 (Unless stated below)
 Cadastre © 2006 Department of Natural Resources and Mines 2009 NAVTEQ Street Data © 2008 NAVTEQ; 2007 Aerial Imagery ©2007 Furgio Spatial Solutions; 2005 Aerial Imagery ©2005 QASCO; 2005 Brisway © 2009 Melway Publishing; 2005 DigitalGlobe Quickbird Satellite Imagery © 2005 DigitalGlobe; 2002 Contours © 2002 AAMHatch

Prepared by:
 Brisbane City Council
 City Projects Office
 GPO Box 1434
 Brisbane Qld 4001

For more information
 visit www.brisbane.qld.gov.au
 or call (07) 3403 8888

Prepared : 089958
 Checked : NC
 Revision : 0
 Publication Date : 17 Jun 2015
 Project Number : 150336

File : G:\BICD\Proj\150336_Sheep_Station_Gully_Fld_Study\ArcGIS\GIM_150336_008_A3L_Extent 2015

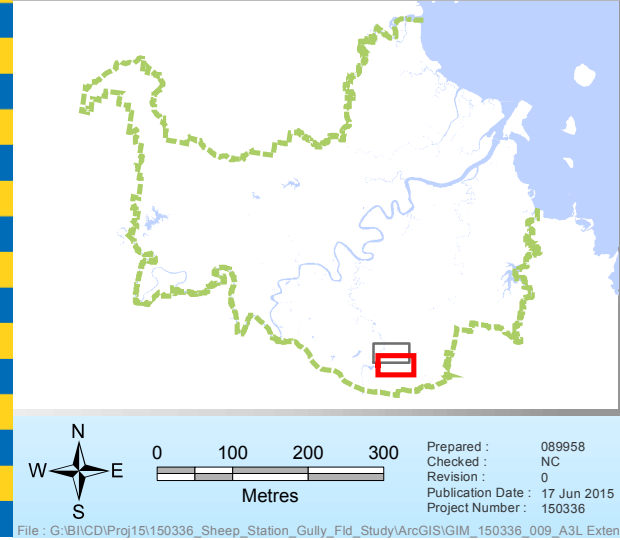
For Information Only - Not Council Policy



Dedicated to a better Brisbane

**Sheep Station Gully Creek
 0.5% AEP Flood Extent Map 2**

Existing Scenario



Legend

- + AMTD Line
- City Plan Waterway Corridors
- Flood Inundation Extent
- Waterway/Waterbody

Prepared by:
 Brisbane City Council
 City Projects Office
 GPO Box 1434
 Brisbane Qld 4001

For more information
 visit www.brisbane.qld.gov.au
 or call (07) 3403 8888

DATA INFORMATION
 The flood maps must be read in conjunction with the flood study report and interpreted by a qualified professional engineer. The flood maps are based on the best data available to Brisbane City Council ("Council") at the time the maps were developed. Council, and the copyright owners listed below, give no warranty in relation to the data (including accuracy, reliability, completeness, currency or suitability) presented in these maps and the user uses and relies upon the data in the maps at its own sole risk and liability. Council is not liable for errors or omissions in the flood maps. To the full extent that it is able to do so in law, the Council disclaims all liability (including without limitation, liability in negligence) for any loss, damage or costs (including indirect and consequential loss and damage), caused by or arising from anyone using or relying on the data contained in the flood maps for any purpose whatsoever.
 ©Brisbane City Council 2014 (Unless stated below)
 Cadastre © 2006 Department of Natural Resources and Mines 2009 NAVTEQ Street Data © 2008 NAVTEQ; 2007 Aerial Imagery ©2007 Furgo Spatial Solutions; 2005 Aerial Imagery ©2005 QASCO; 2005 Brisway © 2009 Melway Publishing; 2005 DigitalGlobe Quickbird Satellite Imagery © 2005 DigitalGlobe; 2002 Contours © 2002 AAMHatch

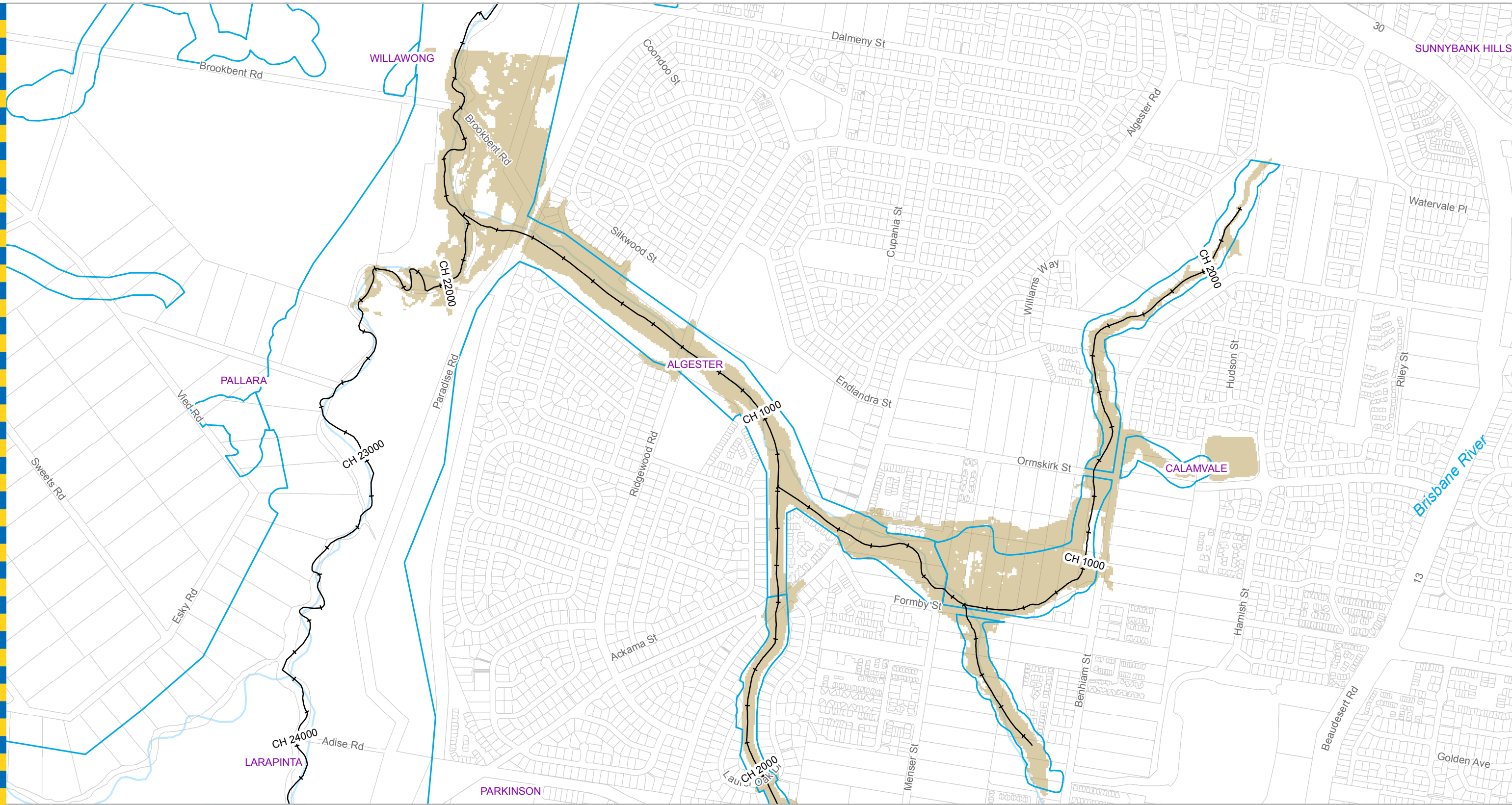


Dedicated to a better Brisbane

Sheep Station Gully Creek 0.2% AEP Flood Extent Map 1

Existing Scenario

For Information Only - Not Council Policy



Legend

- + AMTD Line
- City Plan Waterway Corridors
- Flood Inundation Extent
- Waterway/Waterbody

DATA INFORMATION
 The flood maps must be read in conjunction with the flood study report and interpreted by a qualified professional engineer. The flood maps are based on the best data available to Brisbane City Council ("Council") at the time the maps were developed. Council, and the copyright owners listed below, give no warranty in relation to the data (including accuracy, reliability, completeness, currency or suitability) presented in these maps and the user uses and relies upon the data in the maps at its own sole risk and liability. Council is not liable for errors or omissions in the flood maps. To the full extent that it is able to do so in law, the Council disclaims all liability (including without limitation, liability in negligence) for any loss, damage or costs (including indirect and consequential loss and damage), caused by or arising from anyone using or relying on the data contained in the flood maps for any purpose whatsoever.
 ©Brisbane City Council 2014 (Unless stated below)
 Cadastre © 2006 Department of Natural Resources and Mines 2009 NAVTEQ Street Data © 2008 NAVTEQ; 2007 Aerial Imagery ©2007 Furgo Spatial Solutions; 2005 Aerial Imagery ©2005 QASCO; 2005 Brisway © 2009 Melway Publishing; 2005 DigitalGlobe Quickbird Satellite Imagery © 2005 DigitalGlobe; 2002 Contours © 2002 AAMHatch

Prepared by:
 Brisbane City Council
 City Projects Office
 GPO Box 1434
 Brisbane Qld 4001

For more information
 visit www.brisbane.qld.gov.au
 or call (07) 3403 8888

Prepared : 089958
 Checked : NC
 Revision : 0
 Publication Date : 17 Jun 2015
 Project Number : 150336

File : G:\BICD\Proj\150336_Sheep_Station_Gully_Fld_Study\ArcGIS\GIM_150336_009_A3L_Extent 500.mxd

For Information Only - Not Council Policy

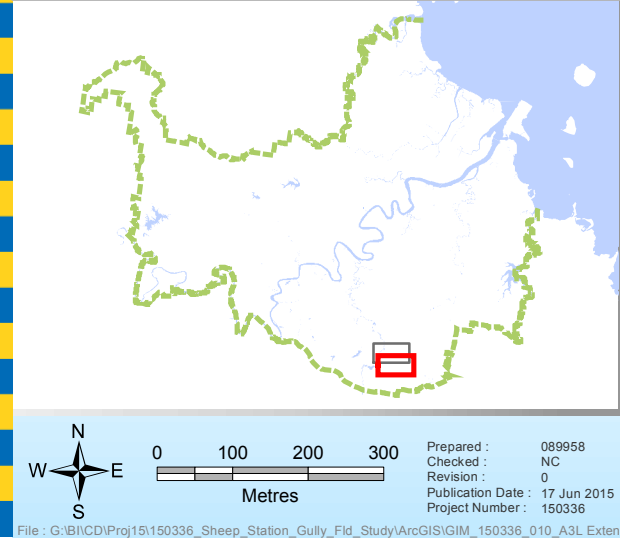


Dedicated to a better Brisbane

**Sheep Station Gully Creek
 0.2% AEP Flood Extent Map 2**

Existing Scenario

GIM - 150336 - 009



- Legend**
- + AMTD Line
 - City Plan Waterway Corridors
 - Flood Inundation Extent
 - Waterway/Waterbody

DATA INFORMATION
 The flood maps must be read in conjunction with the flood study report and interpreted by a qualified professional engineer. The flood maps are based on the best data available to Brisbane City Council ("Council") at the time the maps were developed. Council, and the copyright owners listed below, give no warranty in relation to the data (including accuracy, reliability, completeness, currency or suitability) presented in these maps and the user uses and relies upon the data in the maps at its own sole risk and liability. Council is not liable for errors or omissions in the flood maps. To the full extent that it is able to do so in law, the Council disclaims all liability (including without limitation, liability in negligence) for any loss, damage or costs (including indirect and consequential loss and damage), caused by or arising from anyone using or relying on the data contained in the flood maps for any purpose whatsoever.
 ©Brisbane City Council 2014 (Unless stated below)
 Cadastre © 2006 Department of Natural Resources and Mines 2009 NAVTEQ Street Data © 2008 NAVTEQ; 2007 Aerial Imagery ©2007 Furgo Spatial Solutions; 2005 Aerial Imagery ©2005 QASCO; 2005 Brisway © 2009 Melway Publishing; 2005 DigitalGlobe Quickbird Satellite Imagery © 2005 DigitalGlobe; 2002 Contours © 2002 AAMHatch

Prepared by:
 Brisbane City Council
 City Projects Office
 GPO Box 1434
 Brisbane Qld 4001

For more information
 visit www.brisbane.qld.gov.au
 or call (07) 3403 8888

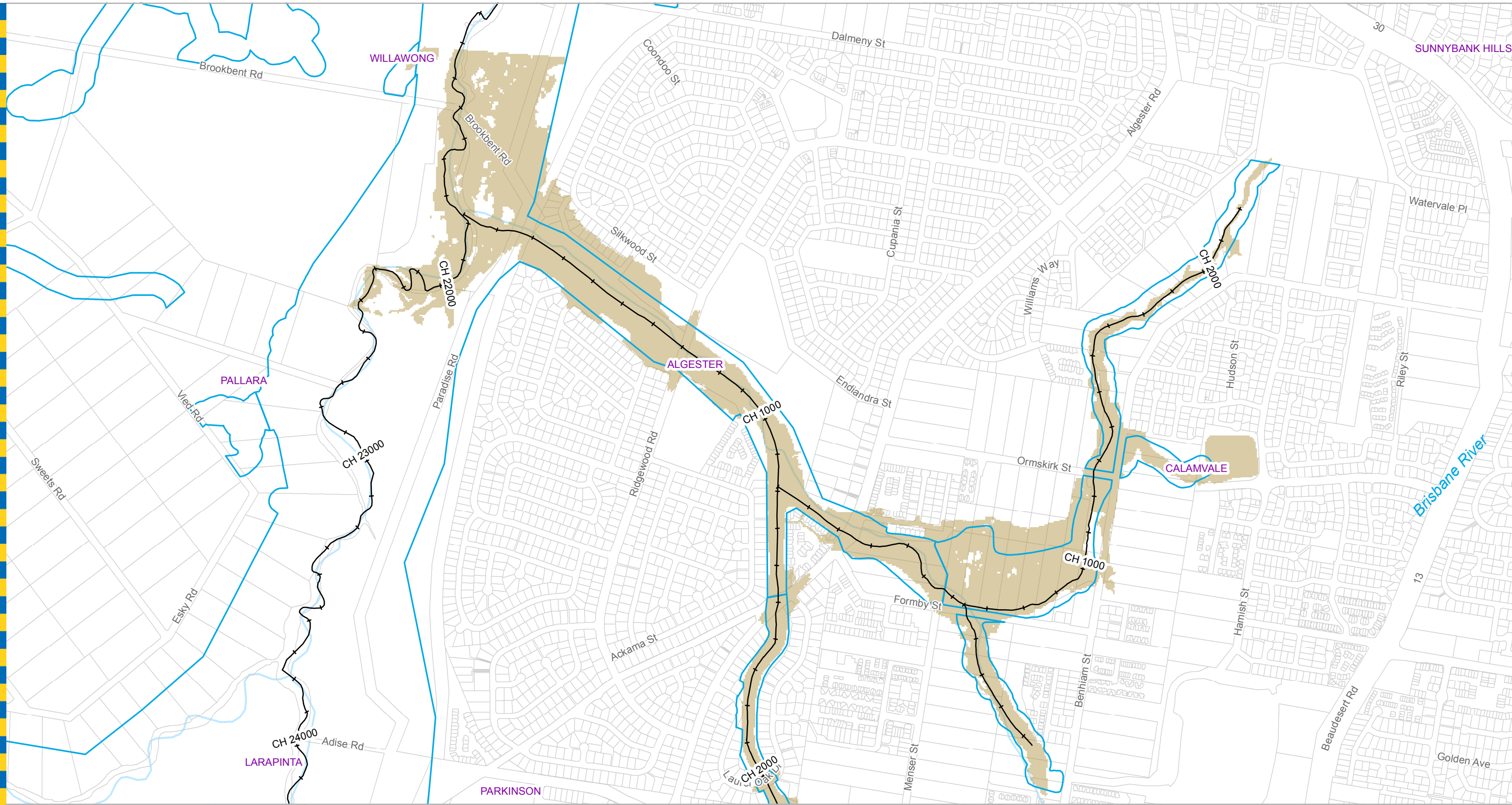


Dedicated to a better Brisbane

Sheep Station Gully Creek 0.05% AEP Flood Extent Map 1

Existing Scenario

For Information Only - Not Council Policy



Legend

- +— AMTD Line
- City Plan Waterway Corridors
- Flood Inundation Extent
- Waterway/Waterbody

DATA INFORMATION
 The flood maps must be read in conjunction with the flood study report and interpreted by a qualified professional engineer. The flood maps are based on the best data available to Brisbane City Council ("Council") at the time the maps were developed. Council, and the copyright owners listed below, give no warranty in relation to the data (including accuracy, reliability, completeness, currency or suitability) presented in these maps and the user uses and relies upon the data in the maps at its own sole risk and liability. Council is not liable for errors or omissions in the flood maps. To the full extent that it is able to do so in law, the Council disclaims all liability (including without limitation, liability in negligence) for any loss, damage or costs (including indirect and consequential loss and damage), caused by or arising from anyone using or relying on the data contained in the flood maps for any purpose whatsoever.
 ©Brisbane City Council 2014 (Unless stated below)
 Cadastre © 2006 Department of Natural Resources and Mines 2009 NAVTEQ Street Data © 2008 NAVTEQ; 2007 Aerial Imagery ©2007 Furgio Spatial Solutions; 2005 Aerial Imagery ©2005 QASCO; 2005 Brisway © 2009 Melway Publishing; 2005 DigitalGlobe Quickbird Satellite Imagery © 2005 DigitalGlobe; 2002 Contours © 2002 AAMHatch



Dedicated to a better Brisbane

Sheep Station Gully Creek 0.05% AEP Flood Extent Map 2

Existing Scenario

For Information Only - Not Council Policy

Prepared by: Brisbane City Council
 City Projects Office
 GPO Box 1434
 Brisbane Qld 4001

For more information
 visit www.brisbane.qld.gov.au
 or call (07) 3403 8888

Prepared: 089958
 Checked: NC
 Revision: 0
 Publication Date: 17 Jun 2015
 Project Number: 150336

File: G:\BICD\Proj\150336_Sheep_Station_Gully_Fld_Study\ArcGIS\GIM_150336_010_A3L_Extent 2005